

**vtech**<sup>®</sup>  
baby

Instruction Manual

# Stick & Twist Hippo



**VTech understands that a child's needs and abilities change as they grow and with that in mind we develop our toys to teach and entertain at just the right level...**

## **vtech** Baby

**Toys that will stimulate their interest in different textures, sounds and colours**

### **I am...**

...responding to colours, sounds and textures

...understanding cause and effect

...learning to touch, reach, grasp, sit-up, crawl and toddle

*Birth-36 months*



## **Pre-School**

**Interactive toys to develop their imagination and encourage language development**

### **I want...**

...to get ready for school by starting to learn the alphabet and counting

...my learning to be as fun, easy and exciting as can be

...to show my creativity with drawing and music so my whole brain develops

*3-6 years*



## **Electronic Learning Computers**

**Cool, aspirational and inspiring computers for curriculum related learning**

### **I need...**

...challenging activities that can keep pace with my growing mind

...intelligent technology that adapts to my level of learning

...National Curriculum based content to support what I'm learning at school

*4-10 years*

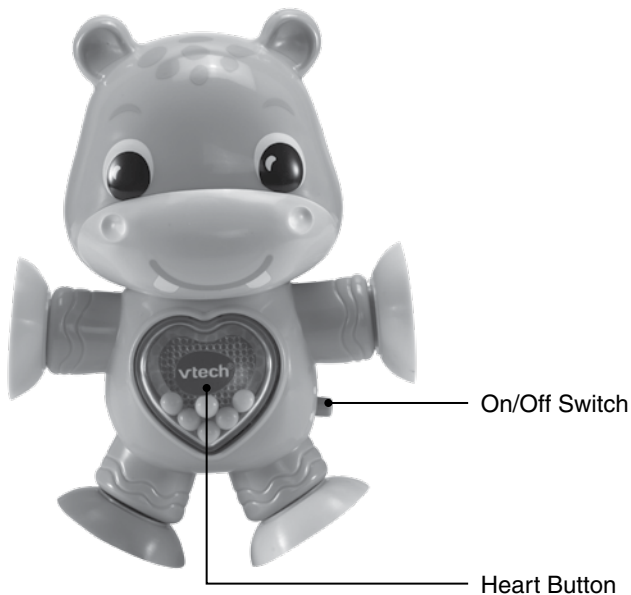


To learn more about this and other VTech® products, visit [www.vtech.co.uk](http://www.vtech.co.uk)

# INTRODUCTION

Introducing the **Stick & Twist Hippo** by VTech®!

This cute little hippo is great for baby to play with! Simply push one of the hippo's suction cups down onto any smooth surface, and let baby push, pull and shake! Hippo responds with a variety of music, sound effects and phrases to add to the fun!



# INCLUDED IN THE PACKAGE

- **Stick & Twist Hippo**
- Instruction Manual

## WARNING

All packing materials such as tape, plastic sheets, packaging locks, removable tags, cable ties, cords and packaging screws are not part of this toy and should be discarded for your child's safety.

## NOTE

Please keep this Instruction Manual as it contains important information.

## NOTE

Please do not leave the hippo suctioned onto white surfaces for prolonged periods of time.

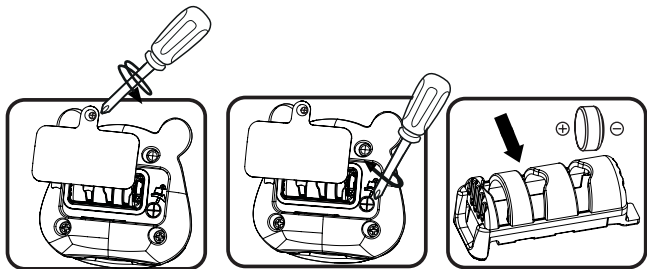
## NOTE

Only suction the hippo onto smooth surfaces. The hippo will not stay suctioned onto rough surfaces.

# GETTING STARTED

## BATTERY REMOVAL AND INSTALLATION

1. Make sure the unit is turned **off**.
2. Find the battery cover located on the back of the unit, use a screwdriver to loosen the screw and then open the battery cover.
3. Locate the screw for the battery unit, use a screwdriver to turn the screw clockwise to release the battery unit.
4. Remove old button cell batteries by pushing the batteries out of the battery unit.
5. Install 3 new button cell batteries (LR44) following the diagram inside the battery unit.
6. Insert the battery unit, you will hear it click into place when inserted correctly.
7. Replace the battery cover and tighten to the screws to secure.



**WARNING:**

Adult assembly required for battery installation.  
Keep batteries out of reach of children.



**WARNING!**

Contains button battery.

A button battery can cause serious injuries if swallowed or placed inside any part of the body.

Individual battery is hazardous. Dispose of used batteries immediately. Keep new and used batteries away from children. If you think batteries might have been swallowed or placed inside any part of the body, seek immediate medical attention.

**Australia**

If you think batteries might have been swallowed or placed inside any part of the body, immediately call the 24-hour Poisons Information Centre on 13 11 26 for fast, expert advice.

**IMPORTANT: BATTERY INFORMATION**

- Insert batteries with the correct polarity (+ and -).
- Do not mix old and new batteries.
- Do not mix alkaline, standard (carbon-zinc) or rechargeable batteries.
- Only batteries of the same or equivalent type as recommended are to be used.

- Do not short-circuit the supply terminals.
- Remove batteries during long periods of non-use.
- Remove exhausted batteries from the toy.
- Dispose of batteries safely. Do not dispose of batteries in fire.

### **RECHARGEABLE BATTERIES:**

- Remove rechargeable batteries (if removable) from toy before charging.
- Rechargeable batteries are only to be charged under adult supervision.
- Do not charge non-rechargeable batteries.

## **Disposal of batteries and product**



The crossed-out wheellie bin symbols on products and batteries, or on their respective packaging, indicates they must not be disposed of in domestic waste as they contain substances that can be damaging to the environment and human health.

The chemical symbols Hg, Cd or Pb, where marked, indicate that the battery contains more than the specified value of mercury (Hg), cadmium (Cd) or lead (Pb) set out in the Batteries and Accumulators Regulation.



The solid bar indicates that the product was placed on the market after 13th August, 2005.

Help protect the environment by disposing of your product or batteries responsibly.

**VTech®** cares for the planet.

Care for the environment and give your toy a second life by disposing of it at a small electricals collection point so all its materials can be recycled.

In the UK:



Visit [www.recyclenow.com](http://www.recyclenow.com) to see a list of collection points near you.

In Australia & New Zealand:

Check with your local council for kerbside collections.

## PRODUCT FEATURES

### 1. On/Off Switch

To turn the unit **On**, slide the **On/Off Switch** to the **On**  position. You will hear a playful song, a cute phrase and sounds. To turn the unit **Off**, slide the **On/Off Switch** to the **Off**  position.



### 2. Automatic Shut Off

To preserve battery life, the **VTech® Stick & Twist Hippo** will automatically power down after the last response. The unit can be turned on again by pressing the Heart Button and triggering the motion sensor.

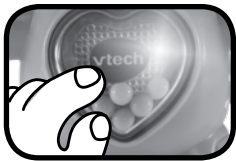
### NOTE

If the unit repeatedly powers down during playing, please install a new set of button cell batteries.

# ACTIVITIES

## 1. Heart Button

Press the heart button to hear fun phrases, songs, sounds and melodies. When a song or a melody is playing, pull and shake the hippo again to add fun sounds on top of the song or melody. The lights will flash with the sounds.



## 2. Motion Sensor

Pull and shake the hippo to hear songs and funny sounds. When a song is playing, pull and shake the hippo again to add fun sounds on top of the song. The lights will flash with the sounds.



## NOTE

Please do not leave the hippo suctioned onto white surfaces for prolonged periods of time.



# MELODY LIST

1. The Entertainer
2. Aiken Drum
3. One, Two, Buckle My Shoe
4. A Daring Young Man on the Flying Trapeze
5. Yankee Doodle
6. Polly Put the Kettle On
7. On Top of Old Smokey
8. Glow Worm
9. The Green Grass Grew All Around
10. Looby Loo

## SING-ALONG SONG LYRICS

### Song 1

I'm a wiggly, giggly, happy, happy hippo!

### Song 2

One, two, three, come and wiggle with me!

Shake me, rattle me, giggle with me!

### Song 3

I can twist, I can move, I'm a happy hippo and I love you!

## CARE & MAINTENANCE

1. Keep the unit clean by wiping it with a slightly damp cloth.
2. Keep the unit out of direct sunlight and away from any direct heat sources.
3. Remove the batteries if the unit will not be in use for an extended period of time.
4. Do not drop the unit on hard surfaces and do not expose the unit to moisture or water.

## TROUBLESHOOTING

If for some reason the program/activity stops working or malfunctions, please follow these steps:

1. Please turn the unit **OFF**.
2. Interrupt the power supply by removing the batteries.
3. Let the unit stand for a few minutes, then replace the batteries.
4. Turn the unit **ON**. The unit should now be ready to play with again.
5. If the product still does not work, install a brand new set of batteries.

If the problem persists, please contact our Consumer Services Department and a service representative will be happy to help you

# CONSUMER SERVICES

Creating and developing **VTech®** products is accompanied by a responsibility that we at **VTech®** take very seriously. We make every effort to ensure the accuracy of the information, which forms the value of our products. However, errors sometimes can occur. It is important for you to know that we stand behind our products and encourage you to call our Consumer Services Department with any problems and/or suggestions that you might have. A service representative will be happy to help you.

## **UK Customers:**

Phone: 0330 678 0149 (from UK) or +44 330 678 0149 (outside UK)  
Website: [www.vtech.co.uk/support](http://www.vtech.co.uk/support)

## **Australian Customers:**

Phone: 1800 862 155  
Website: [support.vtech.com.au](http://support.vtech.com.au)

## **NZ Customers:**

Phone: 0800 400 785  
Website: [support.vtech.com.au](http://support.vtech.com.au)

# PRODUCT WARRANTY/ CONSUMER GUARANTEES

## **UK Customers:**

Read our complete warranty policy online at [vtech.co.uk/warranty](http://vtech.co.uk/warranty).

## **Australian Customers:**

VTECH ELECTRONICS (AUSTRALIA) PTY LIMITED –  
CONSUMER GUARANTEES

Under the Australian Consumer Law, a number of consumer guarantees apply to goods and services supplied by VTech Electronics (Australia) Pty Limited. Please refer to [vtech.com.au/consumerguarantees](http://vtech.com.au/consumerguarantees) for further information.

**Visit our website for more  
information about our products,  
downloads, resources and more.**

***www.vtech.co.uk***  
***www.vtech.com.au***

